

SUCU Church Search 2024



SUCU
SOUTHAMPTON UNIVERSITY
CHRISTIAN UNION

What is Church search?

What is Church Search and how does it work?

Welcome to Southampton! As a CU we are praying for you as you settle into your new home, may I remind you of one of the many promises our Father makes in Deuteronomy 31:8

‘The Lord himself goes before you and will be with you; he will never leave nor forsake you. Do not be afraid; do not be discouraged’.

We know the importance of our Church family at university as we follow the example of the earliest believers in Acts 2:42-47. Church is a body of believers seeking to build each other up, meet, listen to and obey God’s word, pray as a community, equip each other to share the gospel, and much more! We’d love to help you find a church in which you can really feel like you belong as part of the family, and so we have organised a Church Search event this Friday.

In this booklet, you will find a description of local churches in Southampton stating the Church’s vision, times for Sunday services, addresses and what student work they offer. Being a major university city, we are blessed to have so many amazing, Bible-centred churches in Southampton with many offering thriving student work, opportunities for service, outreach, mentorship and teaching.

We hope that this booklet along with the event will help you in your exploration of churches and provide you with more wisdom as you delve into meeting the leaders and attending services for yourself.

CU and Church:

CU is not a Church; we are a body of believers on campus, seeking to give every student the opportunity to hear and respond to the good news and love of Jesus. The CU is supported and encouraged by many churches across the city which our members go to, so we want to help you also find a church where you can grow, be supported, and serve – a home for your time at university and possibly beyond. CU’s weekly Unite’s allows members to be equipped to hold outreach events including, but not limited to, Events Week, International Outreach, halls outreach, one-to-one Bible studies, Alpha and much more.

UCCF Doctrinal Basis

SUCU is a member of UCCF, with whom we share our core beliefs which are outlined here in our doctrinal basis. The basis of the Fellowship shall be the fundamental truths of Christianity, as revealed in Holy Scripture, including:

1. There is one God in three persons, the Father, the Son and the Holy Spirit.
2. God is sovereign in creation, revelation, redemption and final judgement.
3. The Bible, as originally given, is the inspired and infallible Word of God. It is the supreme authority in all matters of belief and behaviour.
4. Since the fall, the whole of humankind is sinful and guilty, so that everyone is subject to God's wrath and condemnation.
5. The Lord Jesus Christ, God's incarnate Son, is fully God; he was born of a virgin; his humanity is real and sinless; he died on the cross, was raised bodily from death and is now reigning over heaven and earth.
6. Sinful human beings are redeemed from the guilt, penalty and power of sin only through the sacrificial death once and for all time of their representative and substitute, Jesus Christ, the only mediator between them and God.
7. Those who believe in Christ are pardoned all their sins and accepted in God's sight only because of the righteousness of Christ credited to them; this justification is God's act of undeserved mercy, received solely by trust in him and not by their own efforts.
8. The Holy Spirit alone makes the work of Christ effective to individual sinners, enabling them to turn to God from their sin and to trust in Jesus Christ.
9. The Holy Spirit lives in all those he has regenerated. He makes them increasingly Christ-like in character and behaviour and gives them power for their witness in the world.
10. The one holy universal church is the Body of Christ, to which all true believers belong.
11. The Lord Jesus Christ will return in person, to judge everyone, to execute God's just condemnation on those who have not repented and to receive the redeemed to eternal glory.

In Southampton we are blessed with a huge number of very good churches and although all of those who take part in Church Search do need to stand in agreement with the above statements, there are many others who hold different views to some of those points. Therefore, this booklet contains a selection of the largest and most popular churches who DO stand in agreement, most of whom have been supporters of SUCU for many years. However, this booklet isn't a definitive list of all of the churches which are available to you. We highly recommend that you check out a number of churches with the aim of finding the church which most suits you – this booklet, if nothing else, is a great place to start.

ABOVE BAR

Vision:

A community of Christians loving God, following Jesus and sharing the hope we have.

Times and number of services:

10am morning service, 6pm evening service (more contemporary feel)

About:

Member of Fellowship of Independent Evangelical Churches.

Student work:

Wednesday night hot meal and Bible study for students. Free lunch and games on The Common, Sept 30, 12-3pm Young adult brunch every first Saturday of the month, 11am-1pm at the church Hot meal after the 6pm service for the first three Sundays in October Young Adult weekend away "Adoptive families" to have you round for Sunday lunch!

Find us on Insta!

Address:

City: 69 Above Bar Street, Southampton, SO14 7FE East: Woodlands Community College, Minstead Avenue, Southampton, SO18 5FX



Anchor community Church

Vision: To know Jesus and make Him known - to bring people to know Jesus

Times and Number of Services: Sunday service 10.30am weekly
/ Ukranian service 3pm fortnightly

Student Work (if applicable): Not currently but happy to do Youth Alpha or start new ministry according to need.

Address: 26 Quob Lane, West End, Southampton, SO30 3HN

Ministries you hold during the week: Connect Group (simple Bible discussion group) Coffee Morning, Youth Club (Age 8 -16) Explorers (Simple Bible study for 8+ yrs



CALVARY CHAPEL SOUTHAMPTON

Vision:

Everything that we do at Calvary is because of the foundational belief that God is alive, He is active and is working among us. We believe that God is an active God who is interested in the lives of people and is actively working to bring about His plans and desires. He uses us, equips us, and empowers us by the Holy Spirit to influence in the world for Him.

Since we believe that God is alive, active and working among us, we believe that we should be excited to gather together with other Christians to worship Him. We believe that He speaks to us through the preaching of His Word, the Bible and that He has given us the Holy Spirit who helps equip us to go into all the world and make disciples of Him.

Times and number of services:

Worship Service- Sundays 10:30am

About:

Calvary Southampton is a community where you can meet Jesus, engage in authentic relationships, and know you are welcomed! We believe in creating an atmosphere where you can grow your relationship with the God Who loves you, discover your gifts and use them for His Glory. Join us for any of our services as we study the Bible verse by verse and grow in our relationships with Jesus!

Student work:

Young Adults Bible Study, 3rd Thursday of the month 7pm (visit our website for details)

Address:

Vermont Cl, Southampton

SO16 7LT



Christ Church Southampton

Vision:

Committed to loving God, loving one another and loving Southampton.

Sunday services:

- 9:30am & 11.15am: at Cantell School
- 6pm: at Burgess Road Library

About:

A lively, gospel-centred church family based next to campus. Member of Fellowship of Independent Evangelical Churches (FIEC) and affiliated with South East Gospel Partnership, Solent Gospel Partnership, and UCCF.



Student events and groups:

- Student Connect: a hot meal followed by a small group bible study. 7.30pm each Sunday at Burgess Road Library straight after the 6pm gathering.



Freshers' events:

- Pizza and Puddings: 7.30pm at Burgess Road Library 22nd September straight after the 6pm gathering.
- Welcome tent and Speed Challenge on 23-26th Sept
- Games in the Bridge on 25th and 27th Sept
- Welcome Lunches on 29th September and 6/13th Oct.

Through the year:

We also have lots of other activities and trips through the year: Student Getaway, Home from Home, Mid-year conference and Summer Bible Week to name a few!



Get in touch:

james@christchurchsouthampton.org.uk,

sophie@christchurchsouthampton.org.uk

Address:

Cantell School, SO16 3GJ (Sundays at 9.30/11.15am)

And Burgess Road Library, SO16 3HF (Sundays at 6pm)



Christ Messiah Church

Vision: To share the good news of our Lord Jesus Christ in our surrounding communities. We aim to:

1. To advance the Christian faith through regular Sunday praise and worship services.

2. To build a community of people becoming disciples to reach their full potential in Christ Jesus through:

CMM

- a. Balanced biblical teachings, worship and prayer, and evangelism.
- b. Service: Using God's gifts and talents for the edification of others.
- c. Fostering healthy relationships with one another as a family of God and with our communities.
- d. Building stable and dependable Christians whose faith will always stand even when tested through fire
- e. Building Christians that daily pursue excellence of character, attitude, and love.

3. To organise edifying family programmes to encourage healthy relationships between the complete family unit, the single parents, and the singles through the following activities:

- a. Family life and Relationship seminars
- b. Social functions: Away tours, Christian film shows, love feasts, etc.

4. To plant churches locally, nationally and internationally.

5. To be involved in community projects that will reach out to the hurting, the depressed, the frustrated, the confused and anyone needing hope and encouragement

6. To engage in youth projects that will help them exercise their minds positively through recreational games and other spiritually healthy social engagement.

7. To establish training and daycare centres for the non-working and working single parents.

8. To establish a bible school that will teach and help believers develop their gifts and talents for use in the household of God and the communities in general.

B. Times and Number of Services: 3 services per week.

1. Sunday Praise and Worship Service: 10 am - 11:45 am
2. Wednesday Bible Study: 7:30 pm - 8:45 pm
3. Friday Prayer Meeting: 7:30 pm - 8:30 pm

C. Student Work (if applicable): No

D. Address: Swaythling Neighbourhood Centre, Hampton Park Way off Broadland Road Via, Burgess Rd, Southampton SO17 3AT

E. Ministries you hold during the week: Evangelism and Choir on Saturdays

Our church website is: <https://www.christmessiah.org.uk/>

CITY LIFE CHURCH

Who we are...



City Life Church is part of God's family in Southampton, sharing everyday life around Jesus. We are committed to being a church known for our beliefs and values, rather than our structures and gatherings, with **everyone, everywhere, every day**, putting these into practice.

As a church family, we don't meet in one place or at a set time every Sunday, we seek to live out daily, weekly, and monthly 'rhythms'; restoring our relationships with God, rediscovering the heart of who He really is, and creating time and space for rest in order to draw closer to Him, and from this place actively sharing the love of God and serving those around us.

Our personal and corporate rhythms allow us to:

- **Grow** in our understanding of Jesus and His word, as well as deepen our relationships with Him
- **Serve** those around us following Jesus' example and instruction
- **Invite** others into meaningful discipling relationships, sharing hospitality and life with those Jesus leads us to invite.
- **Worship** God in Spirit and in truth, both inside and out of a corporate context.

As well as being engaged in our local communities and workplaces, we are actively involved across the city outworking our values of **Compassionate Community, Pioneering, Empowering** and **Creativity** as we work alongside the poor and marginalised including through:

- emotional support for women in massage parlours, strip clubs and selling sex on the street (amberchaplains.org.uk),
- providing welcome, advice and support for refugees (clearproject.org.uk and hkwelcome.org),
- and providing housing, support and community to those who are homeless or at risk of homelessness (citylife.org.uk/activity/rentdeposit/ and Southampton.hopeintoaction.org.uk)

What we do for students...

You will love our friendly and vibrant atmosphere, where being yourself, making new friends, and being all you can be for Jesus are all encouraged and supported. Now that you are away from home, we offer you a home-from-home where you can explore God in new and exciting ways.

Freshers event: We are hosting a student welcome meal at **7pm on 10 October at St Albans Church** – come along and find out more about who we are and how you can be part of the City Life family!

To help us with catering, please book your place here: <https://tinyurl.com/Welcomemeal>

How to contact us...

- Website: citylife.org.uk
- Facebook: [/citylifechurchsouthampton](https://www.facebook.com/citylifechurchsouthampton)
- Email: info@citylife.org.uk



How we gather...

- **Daily:** We encourage everyone to build daily rhythms of prayer, study and worship. For those that wish, we have a daily 6am prayer gathering on zoom. Contact us for the link.
- **Weekly:** We have groups that meet weekly in person and online across the city. You are very welcome to visit these groups – get in touch and we can help you connect.
- **Monthly:** We encourage people to gather **every 1st Sunday** for teaching in their homes, which can be found on our ChurchCenter App and on our resources page (citylife.org.uk/study/).

We meet at St Albans Church, Tulip Road, at **4pm every 4th Sunday** for a time of All Age worship, testimony, and connection.

Covenant Church

Covenant Church exists to raise young people who have a burning passion for Jesus Christ. Our desire is to see young people rise up to become true disciples of Christ who influence the world around them positively by spreading the Gospel of the Kingdom of God.

***Service times and Number of services*:**

11.30AM - Passion Service (For Young adults / University Students)

9.30AM - Family Worship Service

***About*:**

Our worship services are truly inspiring. We are a vibrant non-denominational church on Shirley High street with a growing congregation from all backgrounds.

We are passionate about making Jesus known. Our focus is to teach, inspire and equip young people so they can represent Jesus Christ in all spheres of life.

***Socials*:** @covenantchurchuk on Instagram and YouTube

***Website*:** www.covenantchurch.org.uk

***Student work*:**

We hold our Special Student service (Passion Service) every Sunday at 11.30am.

We aim is to support our students right from Freshers Week to Graduation & beyond.

We also hold Revive meetings by RGCF on many campuses including the two Southampton Universities

***Address*:**

309 - 311 Shirley Rd,
Shirley, Southampton
SO15 3HW

Ministries you hold during the week:

Wednesday teaching service (a service dedicated to learning more from scripture) - Wednesdays
19.00pm

Friday prayer service - Fridays 18.30pm

Passion Service - Sundays at 11.30am

We hold our special student meetings -
Passion Services every Sunday at 11.30am



Highfield Church



Vision:

A community of devoted disciples who encounter God, grow together and seek the Kingdom.

If you want to be part of a community of devoted disciples, we don't expect you to come fully formed! The church is called to make disciples, and at Highfield you can grow by encountering God (at our Sunday services), growing together (through small groups) and seeking the kingdom (reaching out to our community). We derive all we believe, teach, and do from the Bible as the written word of God, while also learning to hear and obey the voice of the Spirit, speaking to us individually and collectively.

Times and Number of Services:

Sun 9am: Liturgical Service (also online)

Sun 10:30am: Contemporary Family (also online)

Sun 10:30am: YTH CHRCH (Church plant aimed at 11-18s, but all welcome)

Sun 6:30pm: Contemporary Evening Service

Weds 10:30am: Holy Communion Service

Student Work (if applicable):

Our student team would love to connect you with what we're doing. Head to @highfieldstudents on Instagram, www.linktr.ee/hfstudents, or you can email students@highfield.church.

Short version of what we do:

- Sunday Services: There are students at all 4 services, with 6:30 having the most.
- Small groups: Weekly student-led groups. Starting Thursday October 3rd, we'll meet for four weeks of student nights to start the year together, before splitting into small groups.
- Prayer Walking: Seeking God on campus.
- We also make time for 1-1 support to help you thrive at Uni.

Though we are a student community, we are also part of a wider church family. Most of our students serve in the worship, tech, hospitality, youth or children's teams, including our mid-week cafe, and you'll see students leading our evening service too. You can make a meaningful impact here, both at Highfield Church and on campus.

Address: Highfield Church, Highfield Lane, SO17 1RL

Ministries you hold during the week:

Open House: free café, food hub, study and prayer space, open to all. Mon-Thu 9-11:30am & Mon-Wed 2:30-4:30pm.

Student nights: Thursdays in October, 7pm, in Highfield Church Centre



KINGS COMMUNITY CHURCH

Vision:

We are a people who are encountering God and are being equipped to transform the Solent and beyond.

OUR VALUES are:

Family - We are a family on mission together.

Freedom - We are seeing people live in freedom through the power of the gospel.

Faith - We are in faith for God to do the impossible.

Times and number of services:

At our Hedge End site we have a 9:15am meeting and an 11am meeting. At our Totton site we have one 10:30am meeting

Student work:

We have a number of 18-30s connect groups midweek and half termly 18-30s equipping and social events.

Address:

King's Community Church,

Upper Northam Road,

Hedge End,

Southampton.

SO30 4BZ

For more information go to kingscommunitychurch.co.uk



Life Church Southampton

Vision: Bringing Life To Every Community

Times and number of services:

10:15am - King Edwards School, Wilton Rd, SO15 5UQ

If you're looking for a church where you can be part of the family with people of all ages on a Sunday morning, then come and join our growing community at King Edwards School at 10:15am every Sunday.

About: We are all about Jesus and are all on an adventure together, to know and follow Him and help anyone in Southampton know and follow him. At Life Church you'll be part of a community that genuinely cares about people. We want to see students in Southampton live out their God given calling as followers of Jesus and their unique calling as students, with all the great opportunities that student-life brings.

Life Church is part of Commission, who belong to the Newfrontiers Family Churches.

On Sundays – we gather as a church to do all the things that Church's do when they gather. You'll find our meetings are modern and pretty informal, with a big focus on being a genuine community, worshipping God and teaching from the bible.

On Weekdays – we have Life Groups that meet all over the city and at a bunch of different times. A great way of getting plugged into the community of Life Church is by being part of a Life Group.

But Life Church is much more than the meetings we have. In essence, what we are offering is the chance to join in with this adventure of knowing Jesus, living for him and building his church together in Southampton. Head to our website or socials to find out more or [email students@lifesouthampton.org](mailto:students@lifesouthampton.org) to get in touch

Student work:

At Life Church you'll be part of a community that genuinely cares about people. We want to see students in Southampton live out their God given calling as followers of Jesus and their unique calling as students, with all the great opportunities that student-life brings.

Students at Life Church tend to be part of the community at one of our Sunday meetings, get involved in our Life Groups that meet throughout the week and are an important part of the life of the church.

Address:

10:15am - King Edwards School, Wilton Rd, SO15 5UQ



NEW COMMUNITY CHURCH

Vision: To see the whole church, following the way of Jesus, making disciples, bringing life and transformation to every area of Southampton and beyond.

Times and number of services: Sunday ay 10am

About: We are a vibrant family church made up of everyday people of all ages and backgrounds. We have a shared vision to see every part of Southampton filled with the good news about Jesus, and to see lives changed and communities transformed by God's amazing love. Our Sunday gatherings include vibrant worship, practical Bible-based teaching, opportunity for prayer, and time to interact with others and build friendships.



We would love to invite you to our Newcomers Welcome on Sunday 8th October after our morning gathering.

Student work: Student Lunches

We run monthly student lunches as a space for our students to enjoy meals and fellowship together, straight after our 10am service. Follow our Instagram @newcommunitystudents to find out dates

Discipleship

At NCC, we like to give students the opportunity to connect with the church family, as well as to learn and grow spiritually together in both Spirit and Word. Students can be paired with someone in the church, meeting regular to dive into the bible and explore a deeper relationship with God

Hubs

We have weekly small groups called 'hubs' with different focuses at various locations and times. Find out what hubs are available to join at newcommunity.org.uk/hubs

Student Hangouts

Our student community often meet outside of church for coffee, games nights and more

Address: Central Hall, St. Mary Street, Southampton, SO14 1NF.

newcommunity
C H U R C H

MAJESTY HOUSE CHURCH

Vision: Healing your past and empowering your future through discovering the love and sacrifice of Jesus Christ our Lord and Saviour.

Times and number of services:

Sundays:

10am: Online service also broadcast at our centre.

<https://majestyhouse.online.church>

11am In-person service. Translations into major languages available

2 hr free childcare available during our Sunday service (also available as a paid job for students who have some experience and would like to serve in this way)

Wednesdays:

7pm: Ask the Pastors - we answer questions sent to us, join online and in-person, food and drinks provided

About: We are a multicultural church, committed to serving God and the needs of our community. Wherever you may be on your spiritual journey, at Majesty House you will find a supportive community with a wealth of opportunities for personal growth and service.

Student work (if any): We are keen and eager to develop our student work. We offer the following courses and programmes that students can be part of.

Alpha course online, CAP money course, School of Christian Development and Success

Café: We run a café during the week (Monday to Friday 9am-4pm) where students can volunteer in their spare time and all volunteers eat free in our café.

We run a food parcel programme on Fridays. Students can get involved in this ministry when they are available and can also get food parcels if they need one.

Youth meetings on Friday evenings and students can get involved in our youth work

Events coming up soon: BBQ night, Bonfire night

Address: Majesty House Centre, Andromeda Road, Lordshill. Southampton
SO16 8BB

We are on the other side of the Sainsbury roundabout. Bus 17 from city centre.

Website: <https://www.majestyhouse.org>



Portswood Church

Vision: A community seeking to grow UP towards God, being transformed in partnership with the Holy Spirit, IN deep loving relationships with each other and reaching OUT into the world with the good news of Christ and His Kingdom.

Times and number of services:

Mornings: 10am Sundays

Evenings: Tues/Wed/Thurs small groups in homes



About: Portswood Church was planted almost 100 years ago, by a bunch of mission minded radical Brethren! They quickly adapted their serviced to embrace the new families attending and to remove any barriers that might prevent them fully encountering God. Today we are the legacy of them, now an independent church, still outward looking, still welcoming to one and all, which makes for a diverse church in age, background and stages of faith.

Student work: The students we've had join us in our faith journey, have always been taken into our hearts! Many have chosen to stay after graduation and others have gone on to fresh opportunities to be used by God in amazing ways! They've all been looking for a church, they would be seen as an individual, not a student passing through. They've been willing to use their gifts in our smallish church, (120) finding their place in the body of Christ. We offer 1-1 mentorship for those who would like it and a family link scheme which gives you the opportunity to be part of a family, whilst away at uni. If this resonates with you, then come check us out on a Sunday and get linked with a small group.

Address:

Portswood Church

Portswood Road

Southampton

SO17 2FY



<https://www.portswood.org/>

Saint Mary's

Vision: Following the way of Jesus, playing our part in the renewal of the city.

Times and Number of Services: We are one Church across two locations.

Saint Mary's Chapel Road. Located in the heart of the city, Chapel Road is our central site and our largest location. It's a vibrant and welcoming environment for every age and stage across 3 services.

9.15am, traditional sung Eucharist service.

10.30am, family service of all ages.

6pm, extended worship, predominantly students and young adults.

Saint Marys Lodge Road. Launching October '24! Just off The Avenue between Portswood & Bevois Valley, Lodge Road is a local site with a laid back feel.

10.30am, family service for all ages.

Student Work: SAINTS Collective is a space for Students & Young Adults, aged 18-29, to gather with the desire to be with Jesus and be set apart for Him on campus and across our city. Our prayer is that the overflow of that would be that every 18 - 29 year old across Southampton comes into contact with someone who knows Jesus. We regularly gather on Thursday evenings alongside gathering in small groups throughout the week.

@saintscollective_

Address: Saint Marys Chapel Road. Saint Mary's Church, Chapel Road, SO14 1AQ & Saint Mary's Lodge Road. St Barnabas Lodge Road Southampton SO14 6RF United Kingdom

Ministries you hold during the week:

Mondays

Bridge the Gap Football: A footballing community for young men aged 18-30

Tuesdays

Alpha: Want to explore more and learn about the Christian faith? Alpha is a perfect place to meet people, enjoy a great dew evenings and ask any questions.

Tables (Small Groups): Our smaller gatherings throughout the week where our Table communities seek to live in and live out the ways of Jesus together.

Wednesday

Tables (Small Groups): Our smaller gatherings throughout the week where our Table communities seek to live in and live out the ways of Jesus together.

Seek first: Nights of worship & encounter as we seek the renewal of our city in the presence of God.

Thursday

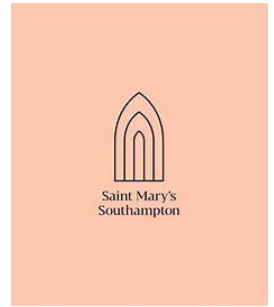
Collective Bible Study: A weekly Bible study held at Martimo Lounge Portswood. Anyone is welcome to join no matter where you are in your journey of faith.

SAINTS Collective: A space for Students & Young Adults, aged 18-29, to gather with the desire to be with Jesus and be set apart for Him on campus and across our city. We gather to eat, connect, worship and learn.

Meeting Place: We host a community pay-what-you-can cafe along with a social supermarket, advice services, exercise call and many other activities.

Thursday Service: On the last Thursday of the month at the meeting place we gather for a short service of prayer, worship and reflection.

Tables (Small Groups): Our smaller gatherings throughout the week where our Table communities seek to live in and live out the ways of Jesus together.



Solent Vineyard Church



Vision: To be a welcoming church family, who are getting to know Jesus and encounter Him more. We want every individual to know and thrive with who God's made them to be and be people bringing His healing and transformation wherever we go.

Times and Services: Sunday mornings meetings - 10:15am at the Plant Pot, Student Union and occasionally at other venues. Mid week - Life Groups, worship & prayer events, community events, socials.

About: We love to worship in a contemporary way and are a Bible based and Holy Spirit loving church. Our passion is to be people who love each other and others with the love God's shown us, 'extending God's Kingdom together, everywhere in every way' (Vineyard Churches). We are part of the wider Vineyard Church.

Address: The Plant Pot, student Union, Southampton Uni – We meet mostly on-site during term time!! Plus at other venues, please do see our website with up to date info. Especially for venues.

<https://www.solentvineyard.org.uk/whats-on>

Contact: Contact us via our webpage [solentvineyard.org.uk](https://www.solentvineyard.org.uk) or directly at jamesw@solentvineyard.org.uk or linwhite@solentvineyard.org.uk

Student Work: We love students and are intentionally meeting at the student union so that we can connect with students! We love students coming to mid week events too.

We regularly invite students to join us for meals in our homes so we can get to know them more and they get more of a chance to connect with us as church family. We love to eat and have fun!

October 16th: James & Lin's house - Solent Vineyard Welcome Evening: Come and eat and find out more!

November 12th: Student Union - We serve students at the Uni in partnership with the Uni Well being team by doing a 'Hamper give away' evening (with Domino's pizza) once a term, everyone's welcome! We help students engage with wider national Vineyard events e.g. Cause to Live for conference, November 15th – 16th (lifts can be provided).



Southampton Lighthouse International Church (SLIC)

Vision:

Our mission is to love God, be family together & reach the world around us for Jesus". Our mission is fixed but our vision changes as we are led by the Holy Spirit year-by-year.



Sunday services:

10:30am in person (and also streamed online)

About:

We are a church in the heart of Southampton full of people from all over the world. No matter your background, history or culture, you are welcome here. Student group: We encourage students to get fully involved in Church life, especially in the following ways:

Collectives:

During the week we'd love you to get involved with one of our small groups 'collectives', to study the Bible, pray with others and grow together as family following Jesus. These will be running fortnightly throughout the autumn on various days of the week, either in person or virtually

Be part of the family:

At Lighthouse we really value family and food. We'd love students to get to know others in the Church, especially over lunch on Sunday afternoons. We hope to provide a 'home away from home' and that you'll feel part of our family.

Address:

St Mary's Road, Southampton, SO14 0BB



Church Weblinks:

All local Southamp churches included in the Church Search are also available to view from our website:

<https://www.sucu.org.uk/church/>

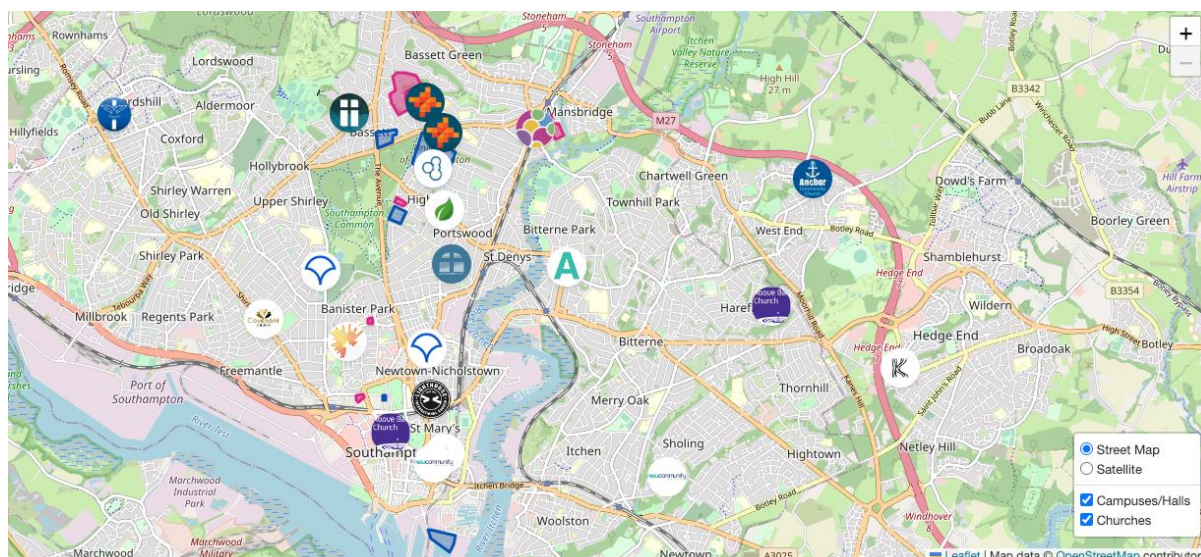
Churches in Winchester:

Churches in Winchester: If you are studying at the Winchester School of Art and are looking for a church in Winchester, the Winchester University Christian Union (WUCU) have put together some resources so just get in touch via this link:

<https://www.facebook.com/winchestercu/>

https://www.instagram.com/winchester_cu/

Church Search map:



**CHURCH SEARCH WEB LINK - INTERACTIVE
CHURCH MAP AVAILABLE!**

Finally...

But there are so many churches – how do I choose?

We are very lucky in Southampton to have so many great churches, but that does make it harder to pick one. Also, many of you will never have needed to do so before. How to start? This is where the Church Search comes in; reading the descriptions in this booklet will give you an idea of what each church is like so you can decide which you'd like to visit. Thinking about what you're used to (style of worship and teaching) can be a good place to start, even if you're pretty sure you don't want to go to an identical church here. You can also look at their websites and pick the brains of current students there. We'd suggest that you look for a church where you'll engage with the teaching, be challenged to apply it to your life and where you feel happy to join their community (and feel able to invite others along!). Most importantly though, make sure you pray about this decision!

Right, I've chosen – what now?

We said that Church is a community – you now need to join that community! Make an effort to go to church as much as you can – if you form the habit now, it will be easier to keep going and harder for it to get crowded out. Try to get to know people, both other students and people in the wider Church family. See if you can join a small group, house group, cell group etc. where you can build deep relationships, digging into the Bible and praying together. These small groups might be meeting virtually or in person. Some churches (often with larger numbers of students) do this within the student group, and others will help you get stuck into a group with other members of the church family. Finally, if it seems like God might be calling you to do so, is there some way you can serve, for example in the band, with kids work or welcoming people into the service?

Church Search is over, and I haven't chosen – what now?

Not to worry, you can still visit all these churches and to help you with that, the church search website can be found at <https://www.sucu.org.uk/church/>! They will all be very welcoming. You can also have a look at Southampton Christian Network's website, scn.org.uk, which has a much longer list of possible churches. There is also the Fusion Link up app for finding churches (fusionmovement.org/studentlinkup), and the Faith and Reflection Centre on Highfield Campus. Remember that no church is perfect. Think about whether the reasons you haven't settled down are important enough to continue not settling down! We're praying for you as you look and are happy to answer any questions you may have. If you're not sure who to ask, message us on Facebook or Instagram.

Blessings,

SUCU!